



Study of the performance and capability of the new ultra-fast 2 GSample/s FADC data acquisition system of the MAGIC telescope

D. TESCARO¹, H. BARTKO², N. GALANTE², F. GOEBEL², T. JOGLER², R. MIRZOYAN², A. MORALEJO¹, T. SCHWEIZER², M. SHAYDUK^{3,2}, M. TESHIMA²

ON BEHALF OF THE MAGIC COLLABORATION.

¹*Institut de Física d'Altes Energies, Edifici Cn., E-08193 Bellaterra (Barcelona), Spain*

²*Max-Planck-Institut für Physik, D-80805 München, Germany*

³*Humboldt-Universität zu Berlin, D-12489 Berlin, Germany*

diegot@ifae.es

Abstract: In February 2007 the MAGIC Air Cherenkov Telescope for gamma-ray astronomy was fully upgraded with an ultra fast 2 GSamples/s digitization system. Since the Cherenkov light flashes are very short, a fast readout can minimize the influence of the background from the light of the night sky. Also, the time structure of the event is an additional parameter to reduce the background from unwanted hadronic showers. An overview of the performance of the new system and its impact on the sensitivity of the MAGIC instrument will be presented.

Introduction

MAGIC is an Atmospheric Cherenkov Telescope situated on the Canary island of La Palma (28.75°N, 17.86°W, 2225 m a.s.l.). Fundamental parameters of the telescope are a 17 m (\varnothing) mirror of parabolic shape (which preserve light time structure), and a hexagonally shaped camera of 576 hemispherical photo-multiplier tubes (PMT). The field of view of the camera is $\approx 3.5^\circ$ diameter. The fast PMT analog signals are routed via optical fibers to the DAQ-system electronics where the signals are digitized and saved on disk. Further details can be found in [2].

Until the end of January 2007 the signals were digitized by a 300 MHz FADCs system. On February 2007 the data acquisition was upgraded with ultra-fast FADCs capable to digitize at the ultra-high speed of 2 GSample/s [4]. In the old system, an additional stretching of the pulses was necessary in order to ensure a proper sampling of the signal. After the upgrade, the stretching is no longer necessary and the width of the pulses is now, ≈ 2.3 ns FWHM, half of the former value. The new system enhances the telescope performance basically for two reasons: a reduction in the amount of NSB

(Night Sky Background) light integrated with the real signal (due to a smaller integration window), and permit to reconstruct with a good time resolution the timing characteristics of the showers.

Signal extraction and Image Cleaning

Currently a cubic spline is applied to find the maximum pulse within the useful range of the FADCs (~ 30 ns), and the position of the maximum of the spline is taken as arrival time of the signal at that pixel. The intensity of the signal is then obtained by integrating the spline in a range of 7.5 ns. The digital filter method, used for the signal extraction for the analysis of MAGIC data in the past, has not yet been tuned to the characteristics of the new hardware. The time resolution of each pixel has been estimated to be around 0.4 ns RMS for a 40 phe signal through the study of the pixel time spread in calibration events, although this value may improve with the use of a more sophisticated pulse reconstruction.

The pixels which belong to the shower image are selected from the whole camera picture by the so-called Image Cleaning (IC) algorithm. The proce-

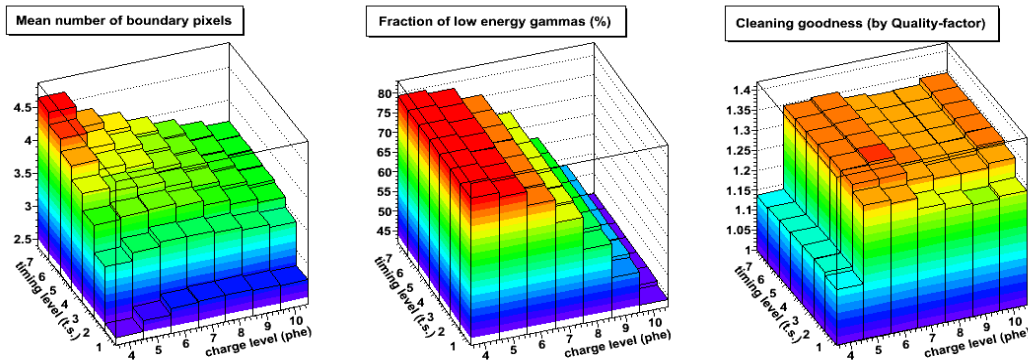


Figure 1: Cleaning features on γ -MC (with a power law spectrum of index -2.6) depending on charge threshold (x in phe) and time constrain (y in time slices: 1 t.s. = 0.5 ns) levels set.

procedure consists in setting a threshold signal value to select the so called "core pixels" (default 10 phe) and a second threshold to select or reject the neighbors as boundary pixels (default 5 phe). The idea behind the use of a further time constrain (imposing a limit on the arrival time difference between pixels) is to lower the pixel threshold, in order to have images with higher pixel number. In other words, a pixel is considered a boundary pixel if its charge is above the boundary threshold, at least one of its neighbors is a core pixel and its arrival time is within $\pm\Delta t$ of that of the core pixel. Requiring this time coincidence allows keeping more information from boundary pixel avoiding to confuse NSB signal with real image tails (since Cherenkov pulses are very short in time, the probability to include a fluctuation is very small).

IC levels have been optimized in this study. Plots in figure 1 represent the characteristics of different levels of cleaning. Only low energy events have been selected, through an upper cut in the signal of the two highest pixels (a parameter which will not change by varying the tail cuts), since the main goal of the reduction of the tail cuts is to lower the energy threshold of the gamma event sample after image cleaning. The entry on the x axis (from 4 to 10) is the core pixel threshold imposed. The threshold for boundary pixels (not written) is always set as half of the core one. On the y axis (from 1 to 7) we have the second important setting level: the time coincidence window imposed between core and boundary pixels (this is expressed in digitization time slices where 1 t.s. = 0.5 ns).

The first plot of figure 1 represents the mean number of boundary pixels in the images. This number increases fast by lowering the charge threshold level but a tighter time coincidence constrain keeps the number of boundary pixels under control. The second histogram describes the fraction of the triggered low energy gammas surviving the IC (at least two neighbor core pixels and three pixels in total are required). More events means essentially a lower energy threshold (more low energy events have been kept). The third plot is meant to classify the goodness of a certain cleaning configuration. The plotted value is the naive quality factor Q (enhancement of the signal to noise ratio) of the best cut in the ALPHA parameter. For a point-like γ -ray source, an upper cut in this parameter rejects a good fraction of the isotropic background while keeping most of the signal. In most of the explored parameter range the quality of ALPHA does not change significantly. The sudden worsening of the image orientation reconstruction happening at a cleaning levels (4;2) phe is likely originated by the introduction of clusters of noise pixels (secondary islands).

Time-related image parameters

In order to exploit the better time resolution of the new FADC system, new time-related image parameters have been introduced and characterized. The TIME RMS parameter estimates the arrival time spread of the Cherenkov photons in the pix-

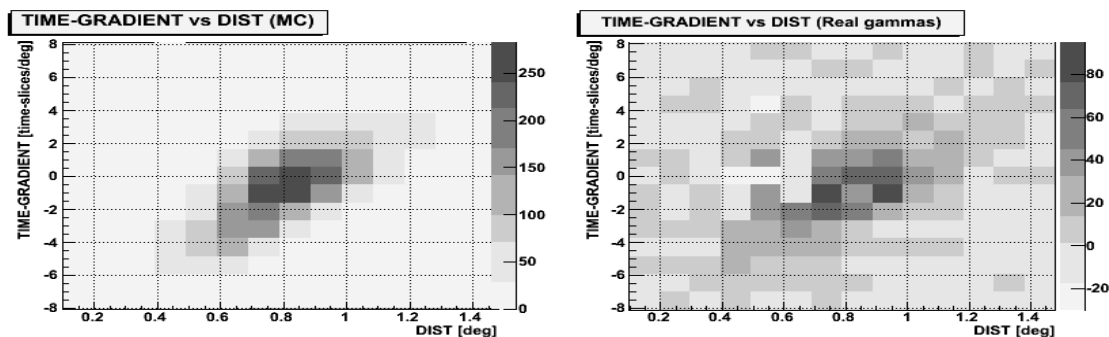


Figure 2: TIME GRADIENT - DIST correlation for MC- γ -ray (left) and real- γ -ray (right) data.

els belonging to the cleaned image (μ , γ -ray and hadron induced showers may have different characteristic time spread[8]). Previous studies[5] determined that along the major axis of gamma induced Cherenkov image is present a time structure. This can be well approximated as a linear TIME GRADIENT. The slope of this gradient is related to the angle between telescope and shower axes and moreover, for showers of a given direction, is well correlated with the Impact Parameter (IP) of the shower.

The possibility of using timing (multiplied by c) as third space coordinate of the charge distribution of the shower is at the moment still under investigation.

Monte Carlo (MC) reliability is of extreme importance to perform a good gamma/hadron separation and energy reconstruction. Both tasks are in fact done comparing simulated γ -ray to real data events. The γ -ray-MC database has been updated accordingly to the new digitization features (for example the value of the time jitter of the PMTs used in the simulation has been tuned using the calibration events). Concerning the standard Hillas[6] parameters the agreement between simulation and real events was known to be good[7], but also a comparison regarding the timing features is needed to ensure the goodness of the MC used.

A data sample of 2.3 h of Crab Nebula observation (8th and 10th of February 2007; zenith angle between 5° and 30°) performed in wobble mode¹ have been used for this purpose. The distribution for the real data gammas is obtained as subtraction between ON and OFF distribution of the pa-

rameter considered. A very loose cut in the γ/h separator parameter² HADRONNESS (<0.8) was applied to preliminarily clean the distributions from completely unusable events. The agreement turns out to be good (see figure 3).

A proof that the TIME GRADIENT - DIST correlation is present also in the real data γ -rays and not only in the MC is given in figure 2. The left plot of the figure is done with pure γ -ray-MC events while the plot on the right is the difference between ON and OFF distribution in the two-dimensional space considered. A correlation TIME GRADIENT - DIST is present in both cases.

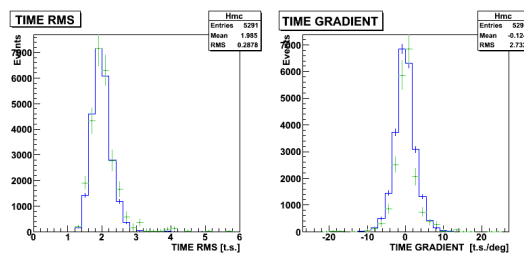


Figure 3: Time-related image parameters, real data-MC comparison. A cut greater than 150 phe in the SIZE parameter has been applied.

1. Source is not pointed directly but 0.04° away, in order to have simultaneous ON and OFF data [3].
2. The Random Forest (RF) [1] γ/h separation method provide a single parameter to estimate the probability of a shower to be γ -ray or hadron initiated.

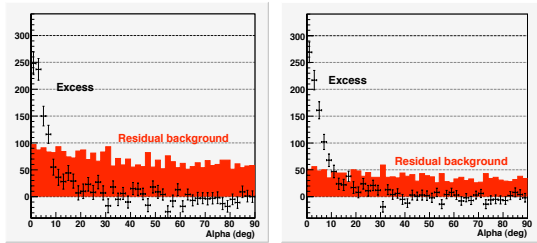


Figure 4: Comparison of two α -plots between analysis 2 (left) and 3 (right). Keeping the same number of excess events background is reduced by about 50%. Estimated energy bin 0.1-10 TeV.

Results and Conclusions

Three different analysis of the same previously described Crab Nebula data have been performed:

1. Using 10-5 IC and standard image parameters for γ/h separation (reference analysis).
2. Using an IC of 6-3 with also the time constrain (level 3 t.s.). The same standard parameters of analysis 1 for γ/h separation.
3. Using the same time IC of analysis 2 and in addition to the standard parameters the TIME RMS and TIME GRADIENT were used for γ/h separation.

In figure 4 we compare two α -plots obtained from analysis 2 and 3. Time parameters allows $\sim 50\%$ better background suppression keeping the same amount of excess events.

In figure 5 is shown a more general comparison: The number of excesses and the significance of the signal is plotted versus the number of background events in the signal region ($\alpha < 7^\circ$) for different HADRONNESS cuts. Note that the Li and Ma significance has been calculated using just one OFF region (the "antisource").

We concentrated here on the α -analysis approach but further studies using the θ^2 method are already planned. How to apply this method in a source position independent framework and how timing could be use for the optimization of DISP are the first issues scheduled. Improvements are also expected in the event energy reconstruction given

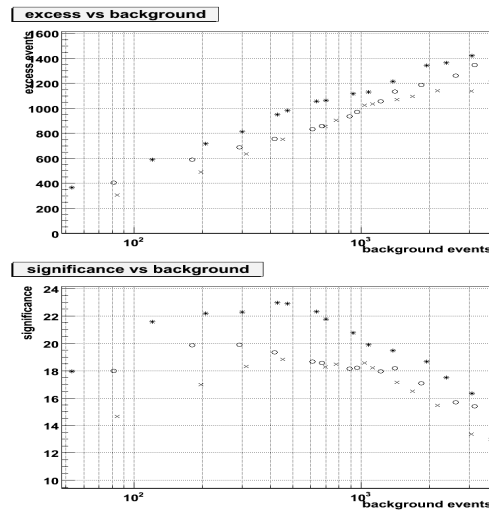


Figure 5: Excess and significance vs number of background events (energy bin 0.1-10 TeV). Cross circle and star points are referred to analysis 1 (reference) 2 (time IC) and 3 (time IC and time parameters) respectively.

that the TIME GRADIENT is correlated with the shower impact parameter.

Acknowledgements

We want to thank the IAC (Instituto Astrofisico de Canarias), the German BMBF and MPG, the Italian INFN, the Spanish CICYT, the Swiss ETH and the Polish MNiI.

References

- [1] R. Bock et al. *NIM*, Jan. 2004.
- [2] J. Cortina et al. In *proc of XXIX ICRC*, 2005.
- [3] V. P. Fomin et al. *Astroparticle Physics*, May 1994.
- [4] F. Goebel et al. In *these ICRC proc.*, 2007.
- [5] HEGRA Coll. *Astroparticle Physics*, 11, July 1999.
- [6] A. M. Hillas. In *proc of XIX ICRC*, Aug. 1985.
- [7] P. Majumdar et al. In *proc. of XXIX ICRC*, 2005.
- [8] D. Sobczynska et al. *astro-ph/0702562*, Feb. 2007.