



Solar activity variation in grand solar minima deduced from cosmogenic radio-carbon

K. MASUDA¹, K. NAGAYA¹, K. KITAZAWA¹, Y. MURAKI^{1,2}, H. MIYAHARA^{3,4}, T. NAKAMURA³

¹*Solar-Terrestrial Environment Laboratory, Nagoya University, Furo-cho, Chikusa-ku, Nagoya 464-8601, Japan*

²*Department of Physics, Konan University, 8-9-1 Okamoto, Higashinada-ku, Kobe 658-8501, Japan*

³*Center for Chronological Research, Nagoya University, Furo-cho, Chikusa-ku, Nagoya 464-8601, Japan*

⁴*Department of Earth & Planetary Science, University of Tokyo, SciBldg#1, 7-3-1 Hongo, Tokyo 113-0033 Japan*

kmasuda@stelab.nagoya-u.ac.jp

Abstract: The sun is variable in its magnetic activity with various periodic cycles such as 11-year Schwabe cycle and longer cycles. Such solar activity variation affects the intensity of galactic cosmic rays entering earth's atmosphere and therefore production rate of cosmogenic isotopes. Annual content of radiocarbon, one of cosmogenic isotopes, in tree rings reflects the change of cosmic ray intensity and the solar activity. In the Maunder Minimum (1645-1715 AD), one of grand solar minima when sunspots were almost absent and the solar activity was very weak, the cycle length of radiocarbon content was much longer than 11-year, indicating the solar Schwabe cycle was also longer. In the Spörer Minimum (1416-1534 AD), which is considered to be another grand solar minimum, however, the cycle length was almost 11-year. In order to confirm whether the variability of cycle length in grand solar minima is related to the long term variation, we have measured annual radiocarbon content in extended periods in the last 1200 years. Based on the result, we will discuss the difference in solar cycle length for solar grand minima.

Introduction

The sun is variable in its magnetic activity with 11-year Schwabe cycle and in the reversal of magnetic polarity with 22-year Hale cycle. These cyclic variations of solar activity and hence changes of the solar wind properties and the interplanetary magnetic field give modulation of the energy spectrum and intensity of galactic cosmic rays (GCR) entering the heliosphere and the earth's environment. The cosmic rays, incident on the upper atmosphere, interact with atmospheric nuclei and produce numerous secondary particles and also many isotopes. Radiocarbon (¹⁴C) is one of those cosmogenic isotopes, whose half-life is 5,730 years. Radiocarbons are created mainly by a process that atmospheric nitrogen nucleus captures a secondary neutron produced by cosmic ray interaction and emits a proton. The

terrestrial radiocarbon production rate in the atmosphere changes with the same periodicity as the cosmic ray intensity. Thus produced radiocarbon forms carbon dioxide CO₂ and circulates in the terrestrial circumstances together with stable carbon isotopes. On the way of carbon cycle, some of carbon dioxides are taken into plants by photosynthesis. Tree rings are a good archive which memorizes the concentration of such radiocarbons in stratified layers. The variation of radiocarbon concentration in tree rings reflects the change of cosmic ray intensity and solar activity in the age when the tree rings were formed.

We have investigated features of the Schwabe cycle and Hale cycle of the solar activity in the past using the variation of ¹⁴C concentration. Solar activity can be known by observation of sunspot number as an index. However, it is not

SOLAR ACTIVITY VARIATION BY RADIOCARBON

possible to know the solar activity from sunspots for the solar activity minima such as the Maunder minimum when the sunspots were almost absent. Before 1,600 AD when telescope was invented, there has been no reliable observation of sunspots and ^{14}C is the best tool to investigate the solar activity in the past. We have measured radiocarbon concentration in the last 1200 years although the entire period was not covered. In this paper, we present the results of our measurements on radiocarbon concentration in tree rings and compare the cyclicity in the several periods, featured as grand solar minima or normal activity period.

Method

We have used three different trees, which are designated as the tree A, B and C. They are all Japanese cedar (*Cryptomeria japonica*). Trees A and B grew at Yaku Island in southern Japan. The geographical location is 30.3°N , 130.5°E . Tree A was cut down in 1956 and 1860 years old. Tree B was cut down in 1991 and 712 years old. Tree C was obtained from Murouji-temple in central Japan. The geographical location is 34.5°N , 136.0°E . This tree fell by a strong typhoon in 1998 and was 382 years old. The years of growth of these trees were determined by measurement of the bomb peak of the ^{14}C content in 1964 and/or by dendrochronological analysis. Information on the sample trees are listed in table 1. Annual tree ring samples were cut off from the blocks. Cellulose component of wood was extracted chemically and then graphite was produced through CO_2 . Measurements of ^{14}C concentration were done using an accelerator mass spectrometer at Nagoya University. A typical measurement error is 0.3 %. Details of sample preparation and measurement are mentioned elsewhere [1, 2].

Results and Discussion

Reimer et al. [3] compiled decadal ^{14}C content for more than 10,000 years and the dataset is called INTCAL04. Figure 1 shows a part of INTCAL04 for the last 1,400 years, together with annual data of our measurements. The properties of the Schwabe and the Hale cycles are mentioned for individual periods as following.

Table 1. Features of sample trees

Tree	Place	Location	Age
A	Yaku	30.3°N 130.5°E	97-1956 AD
B	Yaku	30.3°N 130.5°E	1280-1991 AD
C	Murou-ji	34.5°N 136.0°E	1617-1998 AD

The Maunder Minimum

In a previous paper [1], we have investigated the features of solar cycle during the Maunder Minimum, which is the period of prolonged sunspot minima from 1645 AD to 1715 AD, by measuring the ^{14}C content in tree C with annual time resolution. The sunspot activity has shown scarcely the cyclic structure for this period because of absence of sunspots. However, the frequency analysis of the ^{14}C record has shown a periodic behavior with the period of 13-15 years together with the period of 23-29 years. This result suggests the persistent cyclic magnetic activity and reversals of the solar magnetic polarity throughout the Maunder Minimum with the period several years longer than those of recent solar activity, with an exception that the 11-year periodicity was somewhat suppressed between 1640 to 1670 AD.

The Spoerer Minimum

There exists another peak of ^{14}C content around 1500 AD. This period is usually considered to be one of solar activity minima. We measured annual ^{14}C content in tree B for this period. According to the frequency analysis, however, periods of the Schwabe/Hale cycles were kept at 11 years and 22 years [2]. The amplitude of 11-year cycle was weakened in 1455 to 1510 AD while that of 22 years stayed almost constant.

The Interval between the two minima

The solar activity in the interval between the two minima is considered to be normal or even higher. In addition to the data of the two minima, the ^{14}C contents in annual rings of tree B in this interval

were also measured. The result shows rather short cyclic behavior, that is, 11 year or even 10 years and also 22 years.

Now the time series of ^{14}C content for 333 years from 1413 to 1745 AD is available and displayed in fig. 2. The change of ^{14}C is filtered with 8-35 years to clarify the 11-year and 22 year variation.

The period of 9th to 11th century

In order to confirm the variation of Schwabe cycle in the periods of normal solar activity or even high solar activity, we have measured ^{14}C content in tree A through 9th to 11th century. The period when the ^{14}C content was measured are a period of 880 to 964 AD (10th century) and that of 992 to 1072 AD (11th century). Frequency analysis for the 10th century data shows that there are 10 year and 17 year periodicities around 930 to 950 AD while these cyclicity is weak around 900 to 920 AD. In this period, ^{14}C variation shows a small peak with a width of 40 years, possibly being a solar activity minimum.

The period of 992 to 1072 AD corresponds to early half of the Oort Minimum, which is assigned as one of solar activity minima. Damon et al. [4] measured ^{14}C content from 1065 to 1150 AD, which is the latter half of the Oort Minimum. If we combine these data, the property of the Oort Minimum can be discussed. Our frequency analysis through the Oort Minimum indicates that the 10 years and 22 years periodicity is seen and 10 year periodicity was suppressed or lengthened to 12 years around the deepest period (1050-1080 AD).

Conclusions

We have measured ^{14}C concentrations in Japanese tree rings for the last 1200 years. The periodicity of the Schwabe and Hale cycles was investigated in association with the long term variation of solar activity. The periods of the Schwabe and Hale cycles in the Maunder Minimum were about 14 years and 28 years, showing prolonged periodicity compared to the recent 11 and 22 years. However, those in the Spoerer Minimum seem to be the same as those in the present time although the 11 year cyclicity was suppressed to some

extent in the main term of the minimum. In other periods such as 9th to 11th century and interval of the minima, the periodicities were almost the same as or even shorter than that in the present time. The periodicity of the Schwabe and Hale cycles might be dependent on the extent of long term variation of solar activity. Measurements for various periods are necessary to clarify the dependency.

Acknowledgements

The authors thank K. Kimura for dating of the sample tree rings by dendrochronology. This work was supported by a grant from the Ministry of Education, Culture, Sports, Science and Technology, Japan (Dynamics of the Sun-Earth-Life Interactive System, No. G-4, the 21st Century COE Program) and by the Grant-in-Aid for Scientific Research (B) of the Japan Society for the Promotion of Science (JSPS).

References

- [1] H. Miyahara *et al.*, Solar Phys., **224**, 317 (2004).
- [2] H. Miyahara *et al.*, JGR **111**, A03103 (2006).
- [3] P. J. Reimer *et al.*, Radiocarbon **46**, 1029 (2004).
- [4] P. Damon *et al.*, Radiocarbon **40**, 343 (1998).

Table 2. Comparison of cyclicity in various periods

Age	Period		Suppr ess
	Schwabe Cycle	Hale Cycle	
Maunder Minimum	13-15	24-29	Yes
Spoerer Minimum	11	22	Yes
small minimum + normal period (880-965 AD)	10	17	Partly Yes
normal period (992-1078) + Damon (Oort Minimum)	10 (12)	22	Partly Yes
normal period (1540-1640)	9-11	22	---

SOLAR ACTIVITY VARIATION BY RADIOCARBON

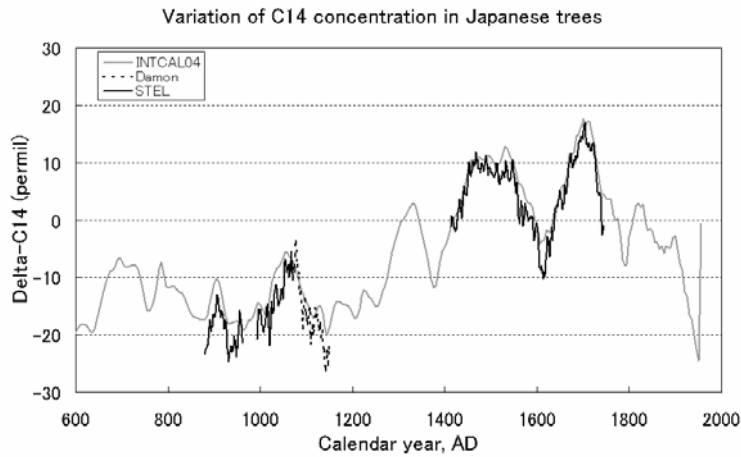


Fig.1 Compilation of our radiocarbon content (black solid curve) with INTCAL04 data (gray curve) from 600 AD to the present, together with Damon's data (black broken curve) for the 11-12th century.

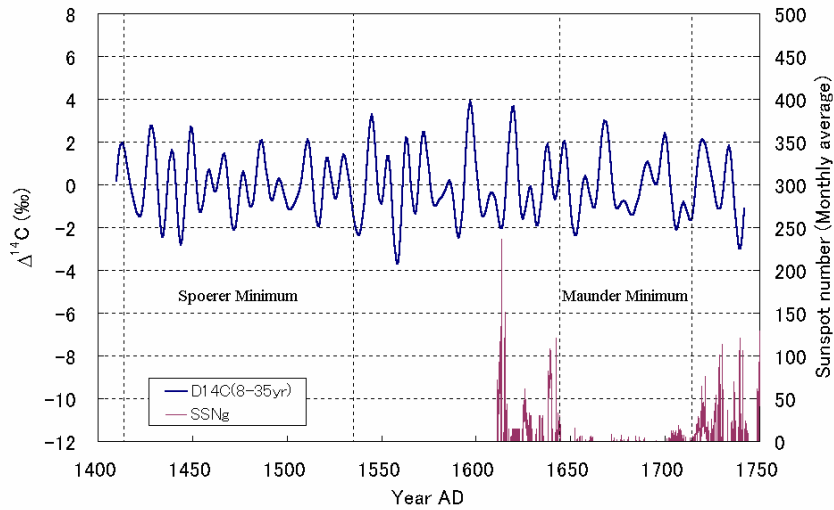


Fig.2 Radiocarbon content from 1413 to 1745 AD filtered with 8-35 years. Monthly sunspot number observed by telescope is also shown. Terms of the Spoerer Minimum and the Maunder minimum are indicated by vertical broken lines.