



Observation of ultra high energy cosmic rays with the surface detector array of the TA experiment

K. KASAHARA¹, H. KAWAI², S. YOSHIDA², H. YOSHII³, T. CHUNG⁴, S. NAM⁴, S. OH⁴, I.H. PARK⁴, J.H. PARK⁴, J. YANG⁴, B.G. CHEON⁵, Y. UNNO⁵, Y.H. YUN⁵, K. TANAKA⁶, F. COHEN⁷, M. FUKUSHIMA⁷, N. HAYASHIDA⁷, K. HIYAMA⁷, D. IKEDA⁷, E. KIDO⁷, Y. KONDO⁷, T. NONAKA⁷, M. OHNISHI⁷, H. OHOKA⁷, S. OZAWA⁷, H. SAGAWA⁷, N. SAKURAI⁷, T. SHIBATA⁷, H. SHIMODAIRA⁷, M. TAKEDA⁷, A. TAKETA⁷, M. TAKITA⁷, H. TOKUNO⁷, R. TORII⁷, S. UDO⁷, Y. YAMAKAWA⁷, H. FUJII⁸, T. MATSUDA⁸, M. TANAKA⁸, H. YAMAOKA⁸, K. HIBINO⁹, T. BENNO¹⁰, M. CHIKAWA¹⁰, K. DOURA¹⁰, T. NAKAMURA¹¹, P. HUENTEMEYER¹², G. SINNIS¹², M. TESHIMA¹³, K. KADOTA¹⁴, Y. UCHIHORI¹⁵, K. HAYASHI¹⁶, Y. HAYASHI¹⁶, S. KAWAKAMI¹⁶, T. MATSUYAMA¹⁶, M. MINAMINO¹⁶, S. OGIO¹⁶, A. OHSHIMA¹⁶, T. OKUDA¹⁶, N. SHIMIZU¹⁶, H. TANAKA¹⁶, D.R. BERGMAN¹⁷, G.A. HUGHES¹⁷, L.M. SCOTT¹⁷, S.R. STRATTON¹⁷, G.B. THOMSON¹⁷, A. ENDO¹⁸, N. INOUE¹⁸, S. KAWANA¹⁸, Y. WADA¹⁸, R. AZUMA¹⁹, T. FUKUDA¹⁹, T. IGUCHI¹⁹, F. KAKIMOTO¹⁹, S. MACHIDA¹⁹, Y. MURANO¹⁹, Y. TAMEDA¹⁹, Y. TSUNESADA¹⁹, J. CHIBA²⁰, K. MIYATA²⁰, J. ORMES²¹, J.A.J. MATTHEWS²², R.U. ABBASI²³, T. ABU-ZAYYAD²³, J.W. BELZ²³, S.A. BLAKE²³, O. BRUSOVA²³, R. CADY²³, Z. CAO²³, C.C.H. JUI²³, K. MARTENS²³, M. MOSTAFA²³, J.N. MATTHEWS²³, D. RODRIGUEZ²³, J.D. SMITH²³, P. SOKOLSKY²³, R.W. SPRINGER²³, J.R. THOMAS²³, S.B. THOMAS²³, L.R. WIENCKE²³, T. DOYLE²⁴, M.J. TAYLOR²⁴, V.B. WICKWAR²⁴, T.D. WILKERSON²⁴, K. HONDA²⁵, K. IKUTA²⁵, T. ISHII²⁵, T. KANBE²⁵, T. TOMIDA²⁵, I.S. CHO²⁶, Y.J. KWON²⁶

¹Advanced Research Institute for Science and Engineering, Waseda University, 3-4-1 Okubo, Shinjuku, Tokyo, 169-8555 Japan

²Chiba University, 1-33 Yayoi-cho, Inage-ku, Chiba, 263-8522 Japan

³Ehime University, 2-5 Bunkyo-cho, Matsuyama, Ehime, 790-8577 Japan

⁴Ewha Womans University, Seoul, Korea

⁵Hanyang University, Seoul, 133-791 Korea

⁶Hiroshima City University, 3-4-1 Ozuka-Higashi, Asa-Minami-ku, Hiroshima, 731-3194 Japan

⁷Institute for Cosmic Ray Research, University of Tokyo, University of Tokyo, 5-1-5 Kashiwanoha, Kashiwa, Chiba, 277-8582 Japan

⁸Institute of Particle and Nuclear Studies, KEK, 1-1 Oho, Tsukuba, Ibaraki, 305-0801 Japan

⁹Kanagawa University, 3-27-1 Rokkakubayashi, Kanagawa-ku, Yokohama, Kanagawa, 221-8686 Japan

¹⁰Kinki University, 3-4-1 Kowakae, Higashi-Osaka, Osaka, 577-8502 Japan

¹¹Kochi University, 2-5-1 Akebono-cho, Kochi, 780-8520 Japan

¹²Los Alamos National Laboratory, Los Alamos, USA

¹³Max-Planck-Institute for Physics, Foehringer Ring 6, 80805 Muenchen, Germany

¹⁴Musashi Institute of Technology, 1-28-1 Tamazutsumi, Setagawa-ku, Tokyo, 158-8558 Japan

¹⁵National Institute of Radiological Sciences, 4-9-1 Anagawa Inage-ku, Chiba, 263-8555 Japan

¹⁶Osaka City University, 3-3-138 Sugimoto-cho, Sumiyoshi-ku, Osaka, 558-8585 Japan

¹⁷Rutgers University, 136 Freilighuysen Road, Piscataway, NJ 08854, USA

¹⁸Saitama University, 255 Shimo-Okubo, Sakura-ku, Saitama, 338-8570 Japan

¹⁹Tokyo Institute of Technology, 2-12-1 Ookayama, Meguro-ku, Tokyo, 152-8550 Japan

²⁰Tokyo University of Science, 2641 Yamazaki, Noda-shi, Chiba, 278-8510 Japan

²¹University of Denver, Denver, USA

²²University of New Mexico, Albuquerque, NM 87131, USA

²³University of Utah, 115 S 1400 E, Salt Lake City, UT 84112, USA

²⁴Utah State University, Logan, UT 84322, USA

²⁵Yamanashi University, 4-4-37 Takeda, Kofu, Yamanashi, 400-8510 Japan

²⁶Yonsei University, Seoul, Korea

hsagawa@icrr.u-tokyo.ac.jp

Abstract: The Telescope Array (TA) experiment is a surface array of 512 plastic scintillation detectors in a grid with 1.2 km spacing with three fluorescence telescope stations in Utah, USA, to study the highest energy cosmic rays of energy beyond 10^{20} eV. We started the major deployment of the surface detectors in October 2006 and 485 detectors were deployed by March 2007. Each surface detector is outfitted with double layer scintillators of 3m^2 area, readout electronics, and wireless LAN communication system, which are powered by solar system. In this talk, we present the performance of the surface detectors and the status of the observed surface detector array data, and discuss the prospect.

Introduction

The main purpose of the TA experiment [1] is the measurement of the cosmic ray spectrum beyond 10^{20} eV decisively to solve an outstanding puzzle about the existence or the nonexistence of the GZK cutoff [2] which originated from the discrepancy reported by AGASA and HiRes experiments.

The TA experiment is a hybrid of a surface detector array and three fluorescence detector (FD) stations. The TA site is located in the desert at an altitude of about 1400 m above sea level near Delta City in Millard County, about 200 km south west of Salt Lake City in the state of Utah in USA. The surface detector (SD) array consists of 512 plastic scintillation detectors in a grid with 1.2 km spacing covering the ground area of about 700 km². For energies greater than 10^{20} eV, more than 90% of the primary energy is transferred to the electromagnetic component (e^+ , e^- and γ) at the end of the shower development. The plastic scintillator is sensitive to the charged particles in air showers, and the energy measurement is less affected by the difference of the detail of unknown hadronic interactions and the primary composition. The TA experiment uses plastic scintillators like AGASA, and it is expected to understand more for the energy scale by AGASA.

An anisotropy of arrival directions of Ultra High Energy Cosmic Rays will be studied in the northern hemisphere where the effect of the galactic disturbance is small.

Surface detector array

Each surface detector consists of plastic scintillators, photomultipliers (PMTs), wave length shifter (WLS) fibers, electronics, wireless LAN communication system, and a solar power system.

The WLS fibers 1 mm in diameter (Kuraray Co.) are installed in the grooves at 2 cm interval on the surface of the plastic scintillator (C.I. Industry Inc.). The scintillation counter consists of two layers of plastic scintillator 1.2 cm thick with the area of 3 m². The scintillation counter is contained in a 2.3m×1.7m×10cm stainless steel box.

Scintillation light is read out by a separate PMT (Electrontubes 9124SA), each connected to the

edge of the bundle of fibers on each layer. Signals from PMTs are digitized using a custom-made main electronics having 12-bit flash ADCs with 50 MHz sampling.

A wave form for a PMT signal is stored locally in a memory with a time stamp supplied by a GPS (Motorola M12+ Timing Oncore Receiver). The rate of local buffering of $\sim 2.5\mu\text{s}$ for the case of a PMT signal exceeding 1/3 of the single muon peak is about 1 kHz. The relative timing between remotely separated surface detectors should be maintained within 20 ns by the GPS for the good resolution of arrival direction.

Each surface detector is equipped with a commercially produced wireless LAN modem board using 2.4 GHz spread spectrum technology. In order to cover communication in the whole surface detector array, the array is divided into three regions. For each region, one communication tower equipped with one host SD electronics is built around the edge of the array. Each surface detector is assigned to one of the three host SD electronics at the towers. A colinear antenna which is indirectional in azimuth is connected to each host SD electronics. The planar-type antenna is used for most of the surface detectors while the parabolic antenna with higher gain is used for the detectors far from the tower.

A list of triggered events with higher trigger threshold containing the pulse height and timing information for the hits is transmitted from the surface detectors to the corresponding host SD electronics at regular intervals such as 1 Hz. The host SD electronics decides the final coincidence trigger based on the trigger table to take wave forms from the surface detectors for a shower event. The trigger efficiency is expected to be about 100% for cosmic rays with energies more than 10^{19} eV entering the scintillation counter with zenith angles less than 45°. The data are transmitted to a central data acquisition system via tower-to-tower wireless LAN communication system which is commercially available. More details on SD data acquisition system are found in [3].

The total electrical power consumed by all the electronics is about 6W. It is locally generated by a solar panel of about 120W (Kyocera, KC120J or KC125TJ) and stored in a battery (C&D Technologies, DCS-100L) of 100 Ah for deep cycle appli-

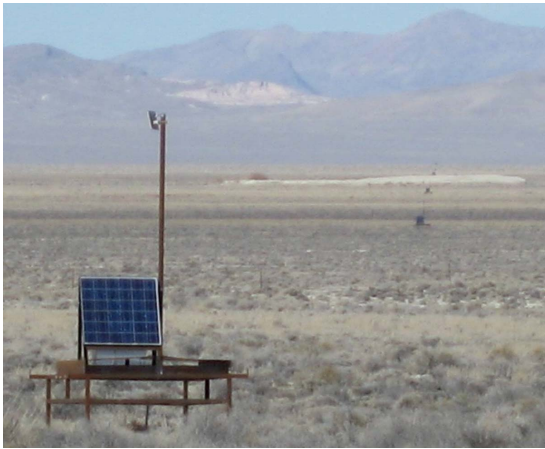


Figure 1: A photograph of a surface detector deployed in the field. A few other detectors can be seen in the distance (in the right side of the photograph).

cation and supplied through a custom-made charge controller.

To check on the stability and detection efficiency of each surface detector, we monitor single muon peak and trigger rate. For the quick check of dynamic range and linearity, we have two LEDs (NICHIA Corp., NSPB320BS) attached to the side of each scintillator layer. The detail on SD calibration is described in [4].

All the necessary equipment for a surface detector is mounted on a platform constructed of 2 inch square tubular steel legs and frame as shown in figure 1. A scintillation counter in a stainless steel box lies on the platform and is covered with a thin steel roof to avoid sunlight and rain. A solar panel is installed on the platform at a 60 degree angle. Behind and below the solar panel is a metal enclosure containing a 12V battery and all the electronics except for the PMTs and the power bases. An antenna pole is attached to the frame supporting the solar panel.

Status and prospect

In December 2004, 18 surface detectors were placed as an engineering array to test the deployment and technical designs. The scintillation coun-

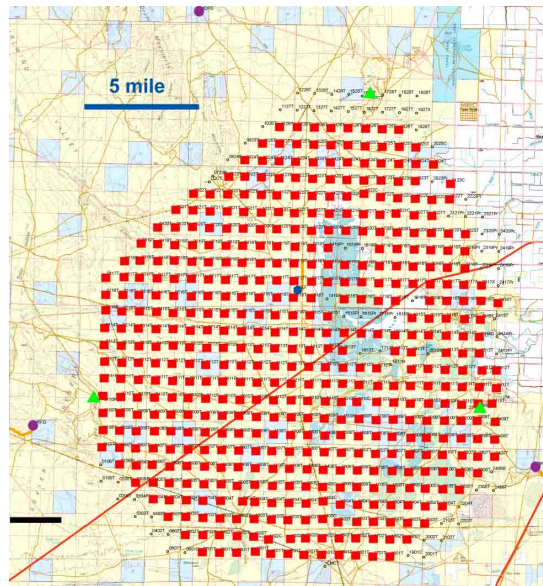


Figure 2: Layout of the surface detector array and telescope stations. The filled red squares show 485 surface detectors which were deployed. The filled green triangles around the edge of the array are for 3 communication towers and the filled purple circles outside the array are for 3 FD stations.

ters in the stainless steel boxes were assembled in Japan in the stage of mass production, and transported to Delta City where all the surface detectors were finally assembled. They were transported by flatbed truck/trailers first to the staging areas in the TA site which are accessible by existing roads. Each surface detector was picked up by helicopter and taken from the staging area to the position to be deployed. We constructed three communication towers about 12 m high in September 2006. In October 2006, we started major deployment of the surface detectors. By the end of February in 2007, 485 surface detectors were deployed as shown in figure 2. Remaining 27 surface detectors will be deployed this fall and the full array is expected to be operational.

The deployed surface detectors are being calibrated and are being tuned. We can see a clear single muon peak in the integrated ADC distribution for the surface detectors. The dependence of the peak value of the single muons on temperature is

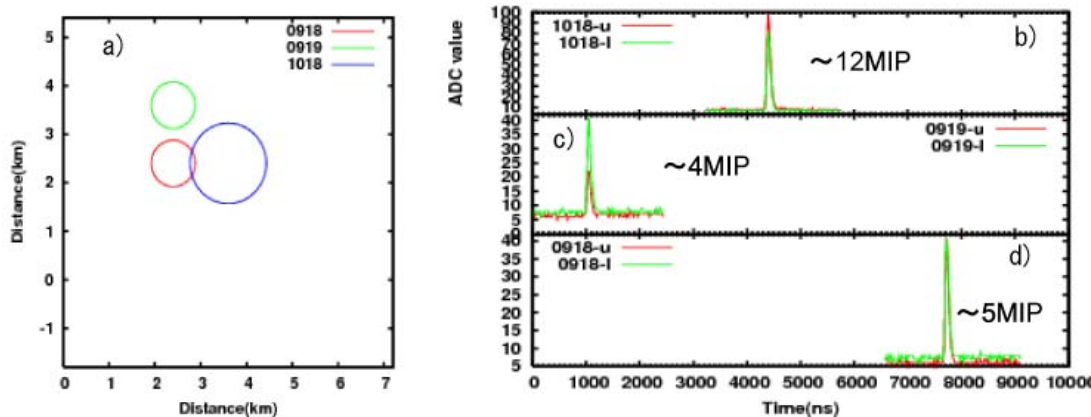


Figure 3: An example of the surface detector data. a) The locations of the three triggered surface detectors. The area of each circle is proportional to the pulse height. b) The wave form distribution for SD#1018, c) that for SD#0919, and d) that for SD#0918.

about -0.7% per degree. After subtracting temperature effect, the single muon peak is stable within 3%. A 3-fold coincidence trigger is set up with a trigger level of three muons for data acquisition of the surface detectors. The trigger rate for this condition is consistent with that of chance coincidence. An example of the observed surface detector array data is shown in figure 3. The detail on the reconstruction of air shower events with the surface detectors is found in [5].

Conclusions

The surface detector array of the TA experiment consists of 512 plastic scintillation detectors. Major deployment of the surface detectors started in October 2006, and we deployed 485 surface detectors by March 2007. The deployed surface detectors are being calibrated and are being tuned. Clear single muon signals from the deployed surface detectors can be seen and the detectors are basically stable. The observed coincidence trigger data from the array is demonstrated. Remaining surface detectors will be deployed this fall and the full array is expected to be operational.

Acknowledgements

We are grateful to the federal Bureau of Land Management, the State of Utah School and Institutional Trust Lands Administration and the people in Millard County for valuable support. We acknowledge financial support from Grant-in-Aid for Scientific Research of Priority Areas by the Ministry of Education, Culture, Sports, Science and Technology of Japan, and U.S. National Science Foundation.

References

- [1] <http://www.telescopearray.org>.
- [2] K. Greisen, Phys. Rev. Lett. **16**, 748 (1966); G. .T. Zatsepin and V. A. Kuzmin, JETP Lett. **4**, 178 (1966).
- [3] S. Ozawa *et al.*, TA Collaboration, 30th ICRC, Merida (2007).
- [4] T. Nonaka *et al.*, TA Collaboration, 30th ICRC, Merida (2007).
- [5] N. Sakurai *et al.*, TA Collaboration, 30th ICRC, Merida (2007)