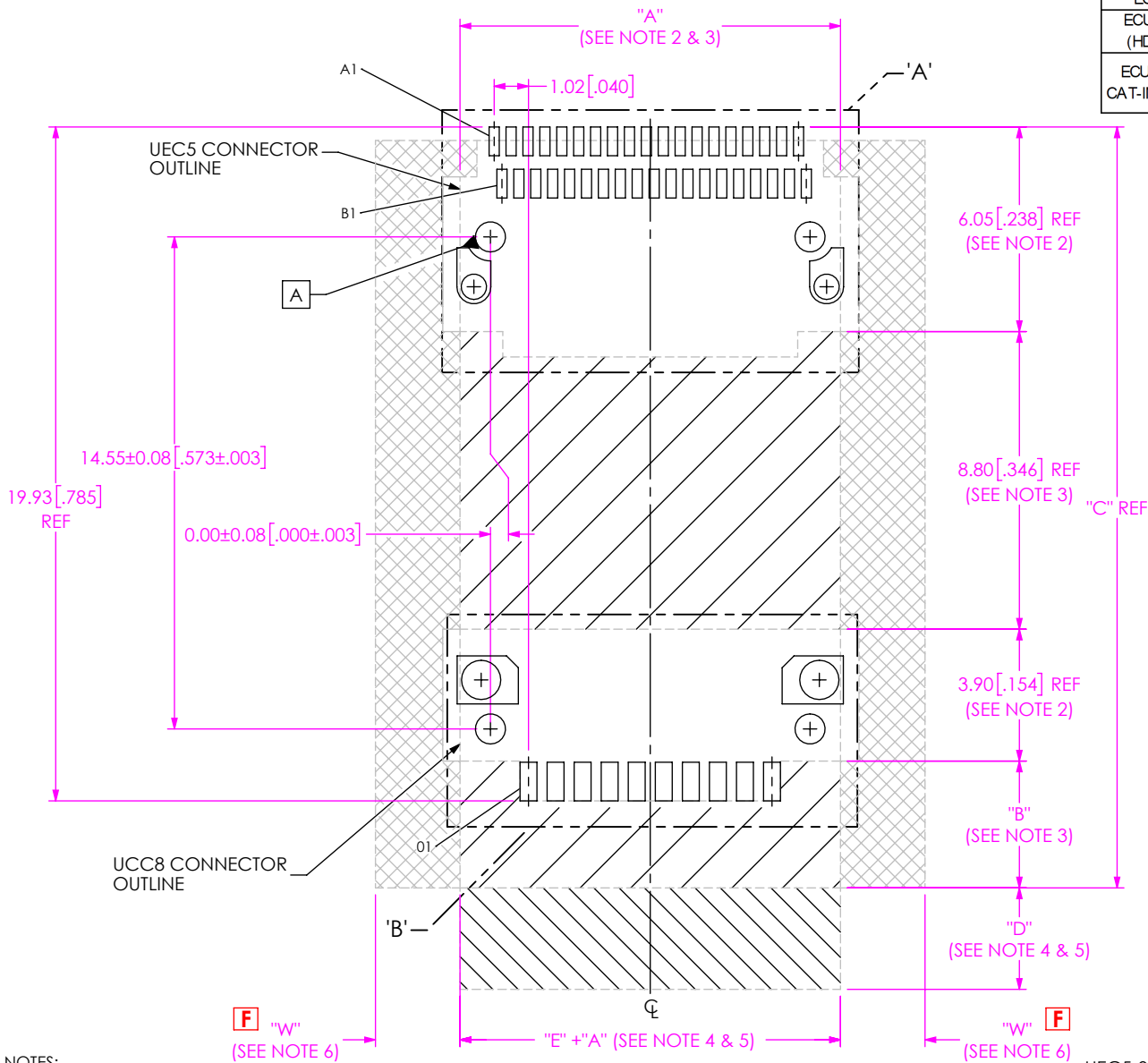


DESIGNED & DIMENSIONED
IN MILLIMETERS [INCHES]

FIREFLY MATE	TABLE 2				
	"B"	"C"	"D"	"E"	"W"
ECUO (OPTICAL)	3.75 [0.148]	22.50 [0.886]	5.50 [0.217]	0.00 [0.000]	0.00 [0.000]
ECUE (COPPER)	6.60 [0.260]	25.35 [0.998]	2.65 [0.104]	0.00 [0.000]	0.00 [0.000]
ECUE TEST CABLE (HDR-179381-XX)	6.60 [0.260]	25.35 [0.998]	17.00 [0.669]	2.51 [0.099]	0.00 [0.000]
ECUO WHEN USING CAT-IN-ECUO-XX TOOL	3.75 [0.148]	22.50 [0.886]	5.50 [0.217]	0.00 [0.000]	5.50 [0.217]



F

TABLE 1		
No Of POS		"A"
UEC5	UCC8	
-019	-010	11.25 [0.443]
*-025	*-014	14.25 [0.561]
*-038	*-020	22.00 [0.866]
*-050	*-028	28.00 [1.102]

TABLE 5	
UCC8 LEAD STYLE	MAXIMUM PCB COMPONENT HEIGHT
-1	0.30 [0.012]
*-2	1.80 [0.071]

(* = NOT TOOLED)

- NOTES:
1. ALL DIMENSIONS ARE SYMMETRIC ABOUT THE CENTERLINE, EXCEPT AS SHOWN.
 2. CONNECTOR ENVELOPE DIMENSIONS, OTHER COMPONENTS PLACED ON PCB SHALL AVOID THIS ZONE.
 3. ABSOLUTE MINIMUM CONNECTOR SYSTEM ENVELOPE AREA, FOR MAXIMUM COMPONENT HEIGHT PLACED ON PCB IN THIS ZONE, SEE TABLE 5.
 4. RECOMMENDED KEEPOUT REGION FOR ROW-TO-ROW LAYOUT OF ECUO AND ECUE. THIS KEEPOUT REGION IS APPLICATION DEPENDENT. FIBER TYPE, HEATSINK STYLE, AND OTHER BOARD COMPONENTS AND HARDWARE SHOULD BE FACTORED IN TO DETERMINE THE APPROPRIATE SPACING FOR ROW-TO-ROW LAYOUT OF ECUO AND ECUE.
 5. CONSULT SAMTEC ENGINEERING FOR MORE INFORMATION AND REFERENCE PART #: APP-ECUX-STACKING.
 6. AREA SIZE AND MAXIMUM COMPONENT HEIGHT IN THIS REGION LIMITED TO ALLOW FOR FLYOVER CABLE OR FIBER CLEARANCE.
 7. THIS AREA MUST BE VOID OF ANY COMPONENTS OR OBSTRUCTIONS TO ALLOW CAT-IN-ECUO-XX TOOL TO WORK PROPERLY WITHOUT DAMAGE TO CUSTOMER BOARD. USE OF THIS TOOL ALSO INCREASES MULTIPLE FIREFLY SIDE-BY-SIDE SPACING; SEE APPLICATION SPEC IN FIREFLY MANUAL.

FIG 1
UEC5-019-1-X-D-RA-1-A SHOWN
UCC8-010-X-X-S-1-A SHOWN

THIS IS THE SECOND GENERATION DESIGN OF THE UEC5 (RUGGEDIZED). SEE DRAWING No ASP-180864-01 FOR THE ORIGINAL DESIGN (ONLY AVAILABLE TO EXISTING CUSTOMERS)

THIS IS THE SECOND GENERATION DESIGN OF THE UCC8 (RUGGEDIZED). SEE DRAWING No ASP-180863-01 FOR THE ORIGINAL DESIGN (ONLY AVAILABLE TO EXISTING CUSTOMERS)

PROPRIETARY NOTE
THIS DOCUMENT CONTAINS CONFIDENTIAL AND PROPRIETARY INFORMATION AND ALL DESIGN, MANUFACTURING, REPRODUCTION, USE, PATENT RIGHTS AND SALES RIGHTS ARE EXPRESSLY RESERVED BY SAMTEC, INC. THIS DOCUMENT SHALL NOT BE DISCLOSED, IN WHOLE OR PART, TO ANY UNAUTHORIZED PERSON OR ENTITY NOR REPRODUCED, TRANSFERRED OR INCORPORATED IN ANY OTHER PROJECT IN ANY MANNER WITHOUT THE EXPRESS WRITTEN CONSENT OF SAMTEC, INC.



520 PARK EAST BLVD, NEW ALBANY, IN 47150
PHONE: 812-944-6733 FAX: 812-948-5047
e-Mail info@SAMTEC.com code 55322

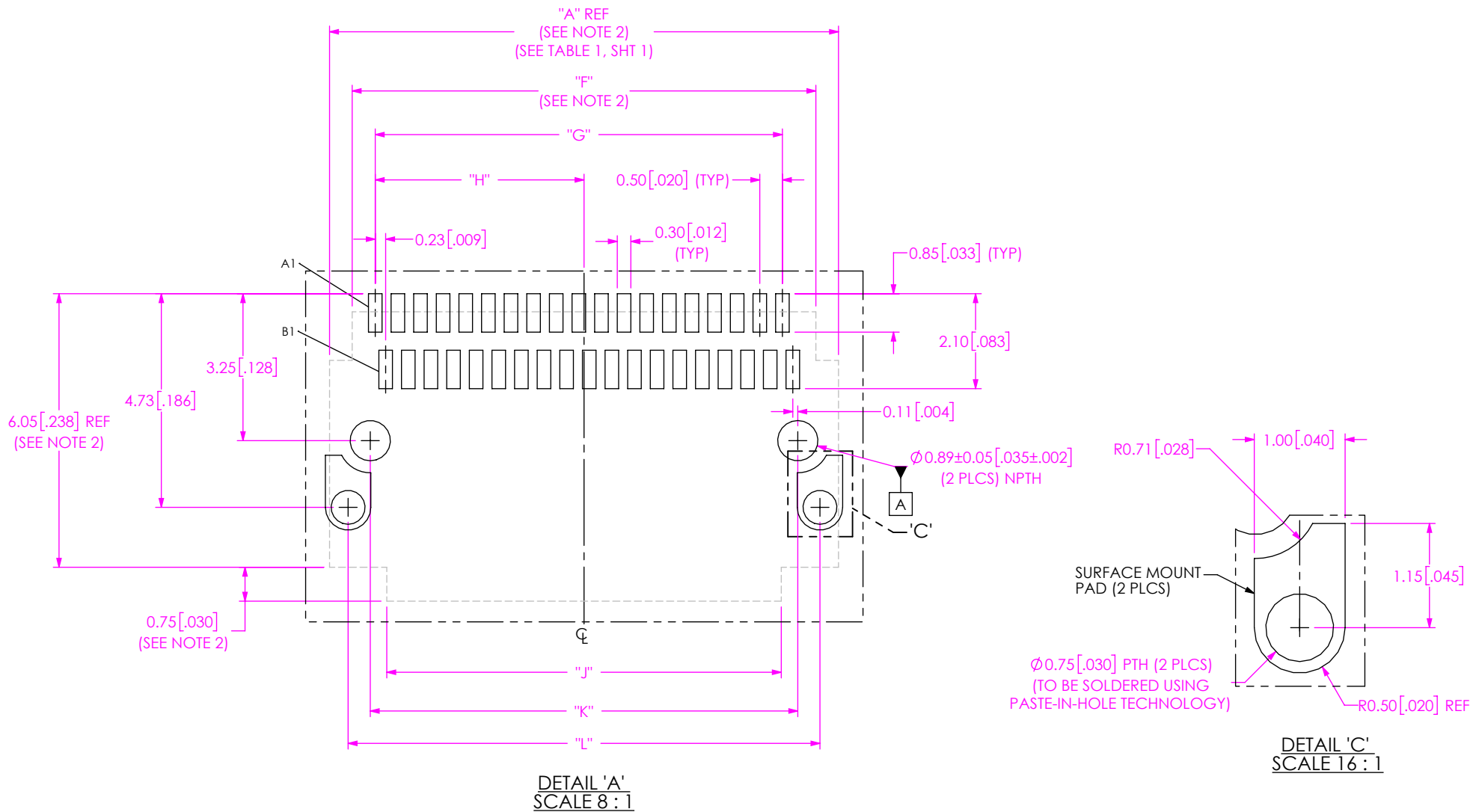


TABLE 3

No OF POS UEC5	"F"	"G"	"H"	"J"	"K"	"L"	"Q"	"R"	"T"
-019	10.25 [0.404]	9.00 [0.354]	4.615 [0.1817]	8.72 [0.343]	9.45 [0.372]	10.45 [0.411]	10.45 [0.411]	N/A	11.45 [0.451]
*-025	13.25 [0.522]	12.00 [0.472]	6.115 [0.2407]	11.72 [0.461]	12.45 [0.490]	13.45 [0.530]	13.45 [0.530]	N/A	14.45 [0.569]
*-038	21.00 [0.827]	19.75 [0.778]	9.990 [0.3933]	19.47 [0.767]	20.20 [0.795]	21.20 [0.835]	21.20 [0.835]	9.00 [0.354]	22.20 [0.874]
*-050	27.00 [1.063]	25.75 [1.014]	12.990 [0.5114]	25.47 [1.003]	26.20 [1.031]	27.20 [1.071]	27.20 [1.071]	12.00 [0.472]	28.20 [1.110]

(* = NOT TOOLED)

PROPRIETARY NOTE
 THIS DOCUMENT CONTAINS CONFIDENTIAL AND PROPRIETARY INFORMATION AND ALL DESIGN, MANUFACTURING, REPRODUCTION, USE, PATENT RIGHTS AND SALES RIGHTS ARE EXPRESSLY RESERVED BY SAMTEC, INC. THIS DOCUMENT SHALL NOT BE DISCLOSED, IN WHOLE OR PART, TO ANY UNAUTHORIZED PERSON OR ENTITY NOR REPRODUCED, TRANSFERRED OR INCORPORATED IN ANY OTHER PROJECT IN ANY MANNER WITHOUT THE EXPRESS WRITTEN CONSENT OF SAMTEC, INC.



520 PARK EAST BLVD, NEW ALBANY, IN 47150
 PHONE: 812-944-6733 FAX: 812-948-5047
 e-Mail info@SAMTEC.com code 55322

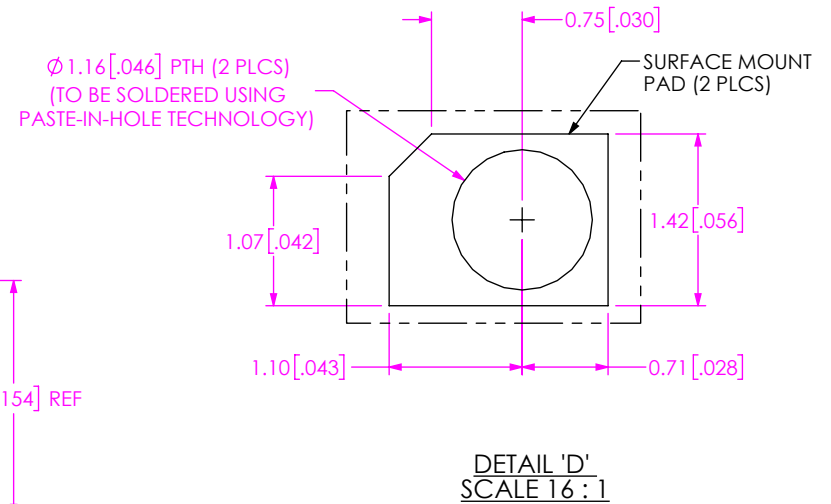
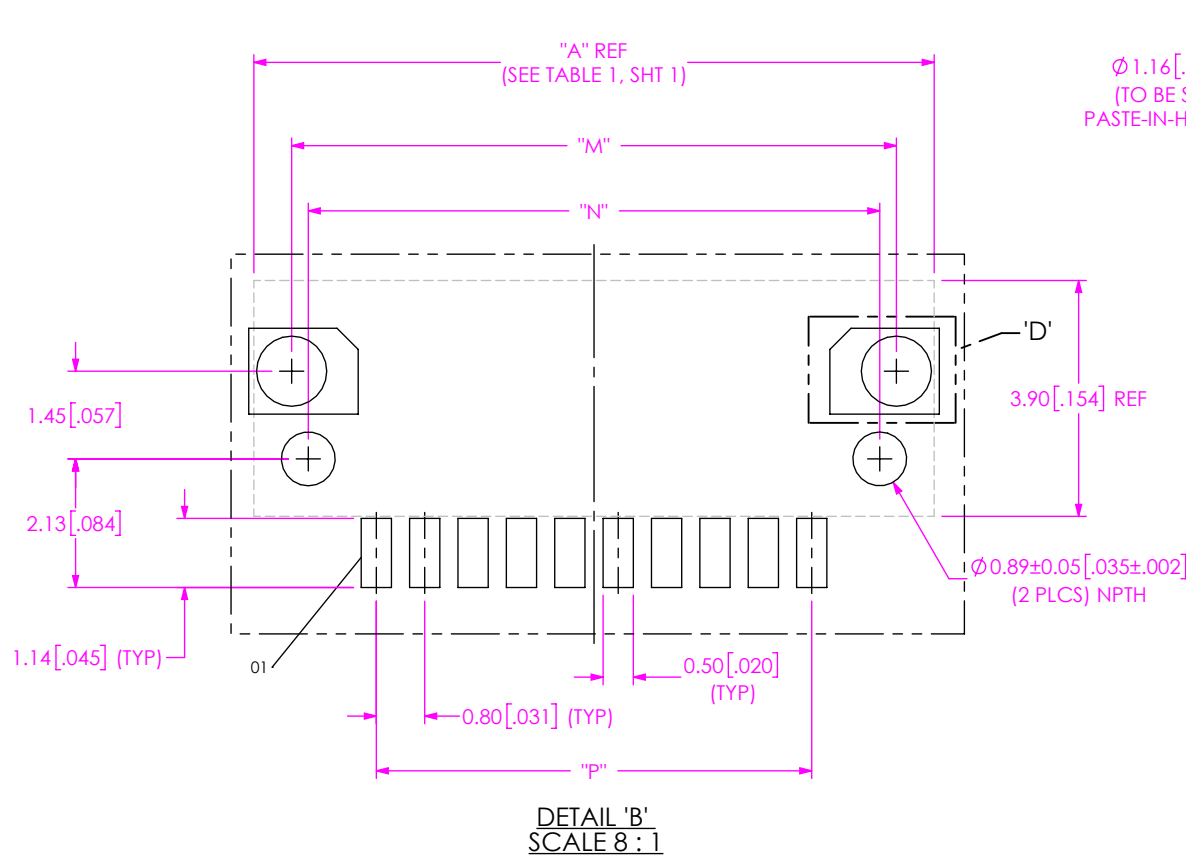


TABLE 4

No OF POS UCC8	"M"	"N"	"P"	"S"	"U"	"V"
-010	10.00 [0.394]	9.45 [0.372]	7.20 [0.283]	N/A	11.61 [0.457]	11.45 [0.451]
*-014	13.00 [0.512]	12.45 [0.490]	10.20 [0.402]	N/A	14.61 [0.575]	14.45 [0.569]
*-020	20.75 [0.817]	20.20 [0.795]	17.95 [0.707]	7.20 [0.283]	22.36 [0.880]	22.20 [0.874]
*-028	26.75 [1.053]	26.20 [1.031]	23.95 [0.943]	10.20 [0.402]	28.36 [1.117]	28.20 [1.110]

(* = NOT TOOLED)

PROPRIETARY NOTE
THIS DOCUMENT CONTAINS CONFIDENTIAL AND PROPRIETARY INFORMATION AND ALL DESIGN, MANUFACTURING, REPRODUCTION, USE, PATENT RIGHTS AND SALES RIGHTS ARE EXPRESSLY RESERVED BY SAMTEC, INC. THIS DOCUMENT SHALL NOT BE DISCLOSED, IN WHOLE OR PART, TO ANY UNAUTHORIZED PERSON OR ENTITY NOR REPRODUCED, TRANSFERRED OR INCORPORATED IN ANY OTHER PROJECT IN ANY MANNER WITHOUT THE EXPRESS WRITTEN CONSENT OF SAMTEC, INC.



520 PARK EAST BLVD, NEW ALBANY, IN 47150
PHONE: 812-944-6733 FAX: 812-948-5047
e-Mail info@SAMTEC.com code 55322

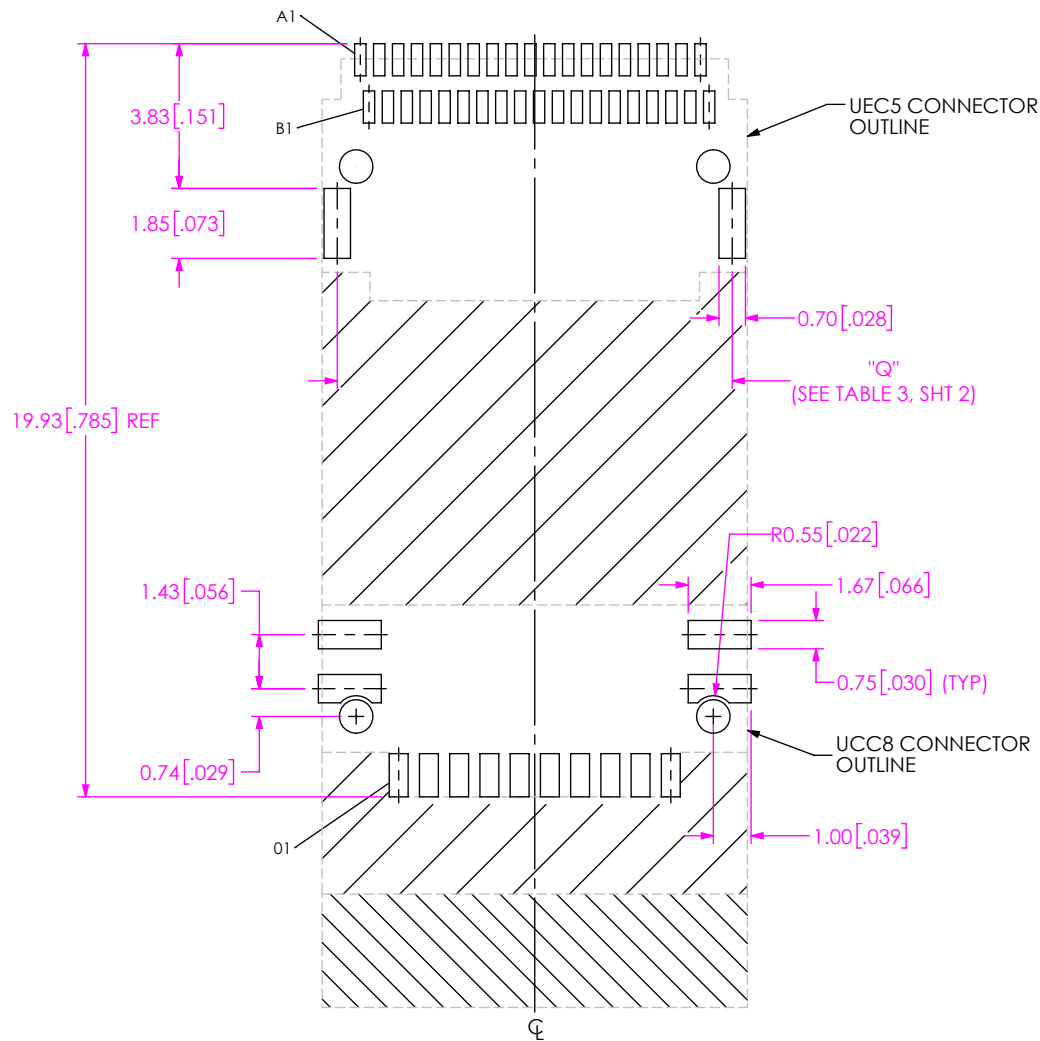


FIG 2
 UEC5-019-1-X-RA-2-A SHOWN
 UCC8-010-X-X-S-2-A SHOWN
 (DIFFERENT AS SHOWN, OTHERWISE SAME AS FIG 1)
 (AVAILABLE FOR EXISTING CUSTOMERS ONLY)

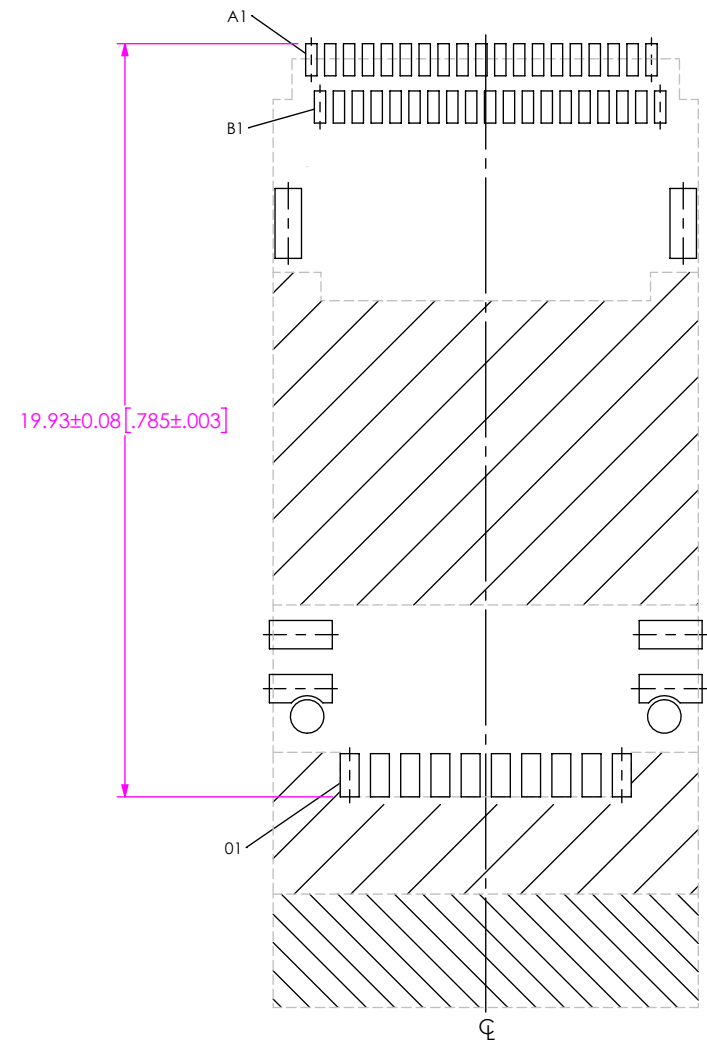


FIG 3
 UEC5-019-1-X-RA-2 SHOWN
 UCC8-010-X-X-S-2-A SHOWN
 (DIFFERENT AS SHOWN, OTHERWISE SAME AS FIG 2)
 (NOT TOOLED)
 (AVAILABLE FOR EXISTING CUSTOMERS ONLY)

PROPRIETARY NOTE
 THIS DOCUMENT CONTAINS CONFIDENTIAL AND PROPRIETARY INFORMATION AND ALL DESIGN, MANUFACTURING, REPRODUCTION, USE, PATENT RIGHTS AND SALES RIGHTS ARE EXPRESSLY RESERVED BY SAMTEC, INC. THIS DOCUMENT SHALL NOT BE DISCLOSED, IN WHOLE OR IN PART, TO ANY UNAUTHORIZED PERSON OR ENTITY NOR REPRODUCED, TRANSFERRED OR INCORPORATED IN ANY OTHER PROJECT IN ANY MANNER WITHOUT THE EXPRESS WRITTEN CONSENT OF SAMTEC, INC.



520 PARK EAST BLVD, NEW ALBANY, IN 47150
 PHONE: 812-944-6733 FAX: 812-948-5047
 e-Mail info@SAMTEC.com code 55322

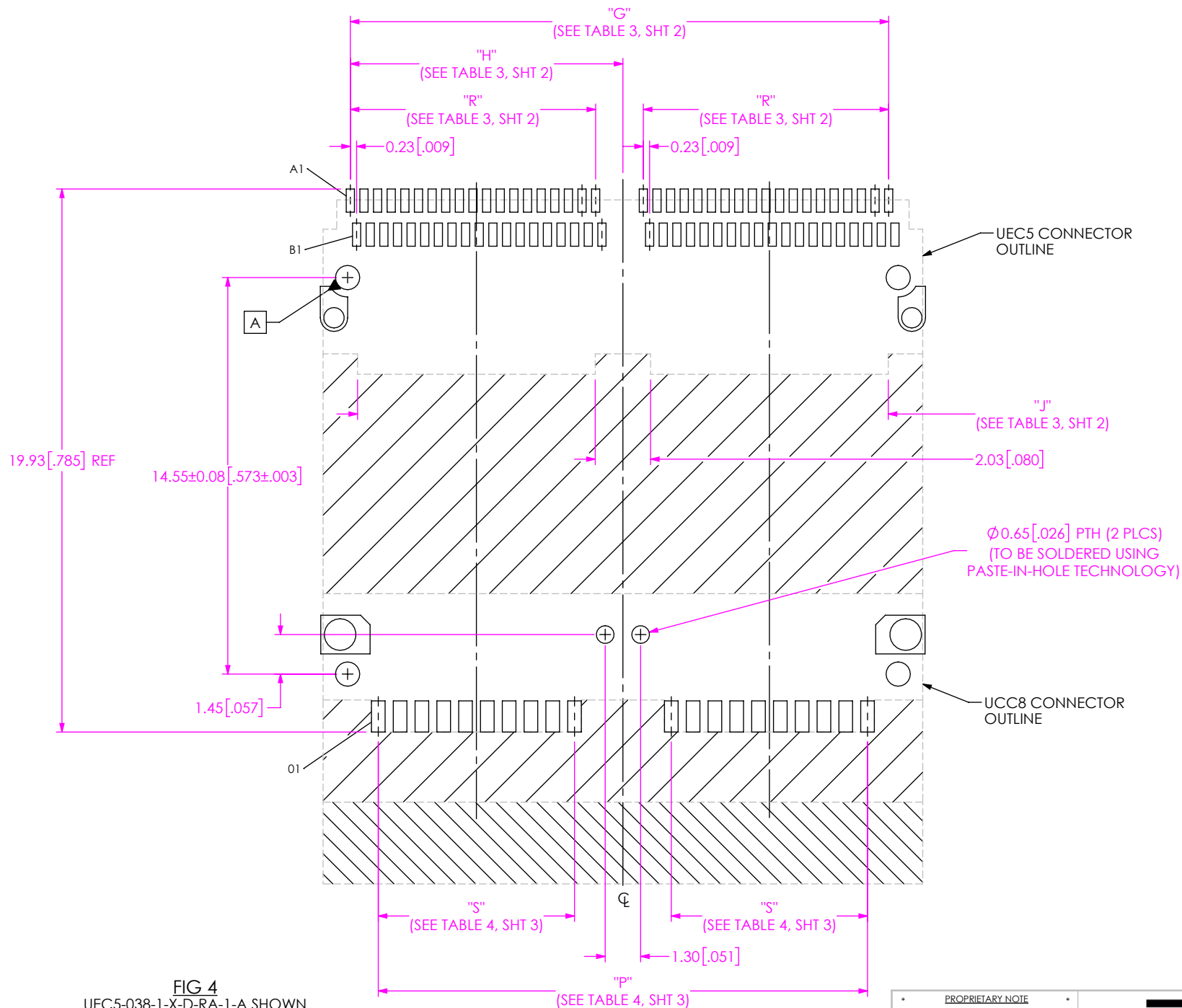


FIG 4
 UEC5-038-1-X-D-RA-1-A SHOWN
 UCC8-020-X-X-S-1-A SHOWN
 (DIFFERENT AS SHOWN, OTHERWISE SAME AS FIG 1)
 (NOT TOOLED)

PROPRIETARY NOTE
 THIS DOCUMENT CONTAINS CONFIDENTIAL AND PROPRIETARY INFORMATION AND ALL DESIGN, MANUFACTURING, REPRODUCTION, USE, PATENT RIGHTS AND SALES RIGHTS ARE EXPRESSLY RESERVED BY SAMTEC, INC. THIS DOCUMENT SHALL NOT BE DISCLOSED, IN WHOLE OR IN PART, TO ANY UNAUTHORIZED PERSON OR ENTITY NOR REPRODUCED, TRANSFERRED OR INCORPORATED IN ANY OTHER PROJECT IN ANY MANNER WITHOUT THE EXPRESS WRITTEN CONSENT OF SAMTEC, INC.



520 PARK EAST BLVD, NEW ALBANY, IN 47150
 PHONE: 812-944-6733 FAX: 812-948-5047
 e-Mail info@SAMTEC.com code 55322

NOTE:
STENCIL TO BE 0.13[.005] THICK.

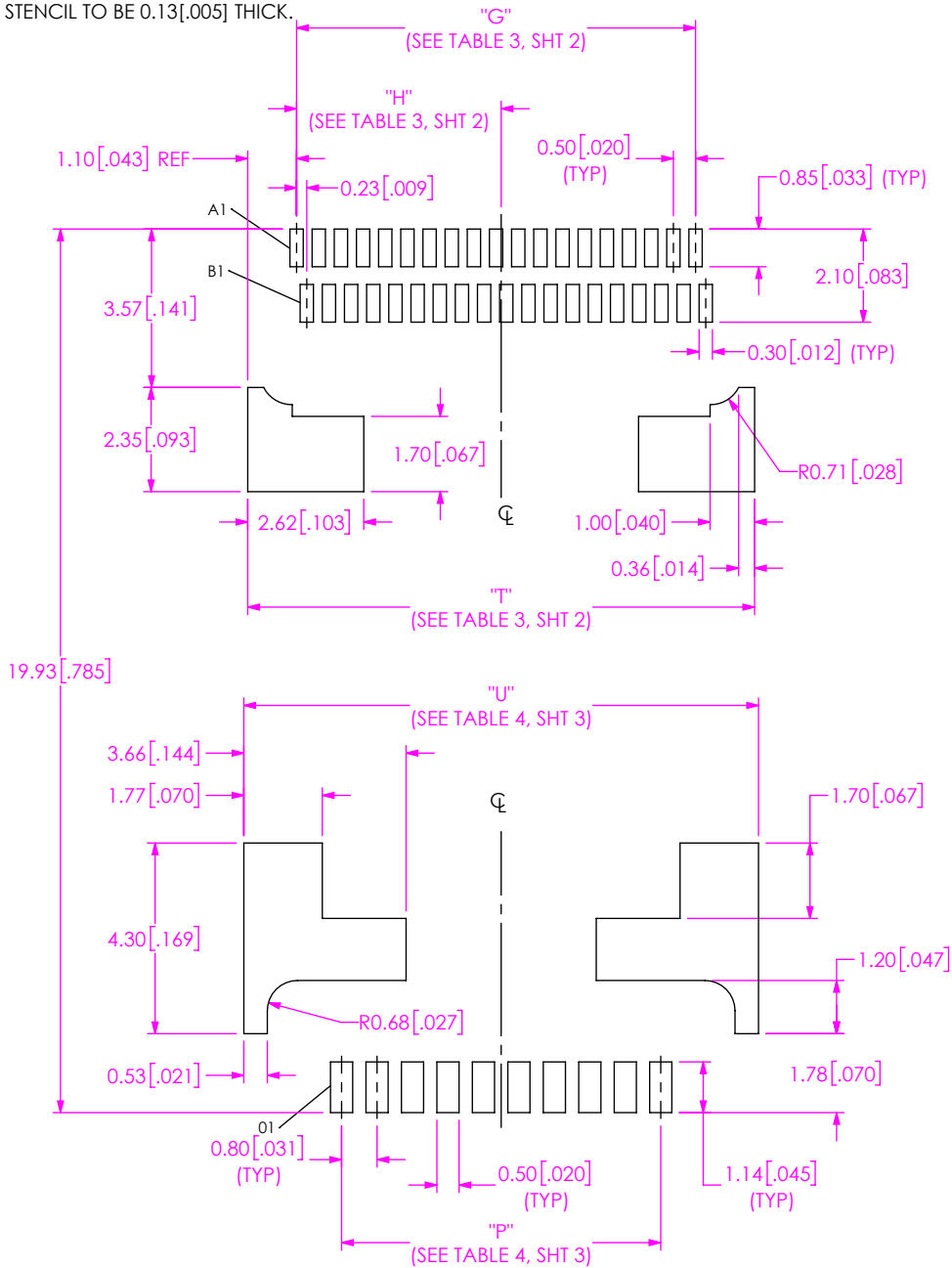


FIG 5
UEC5-019-1-X-D-RA-1-X STENCIL SHOWN
UCC8-010-X-X-S-1-A STENCIL SHOWN

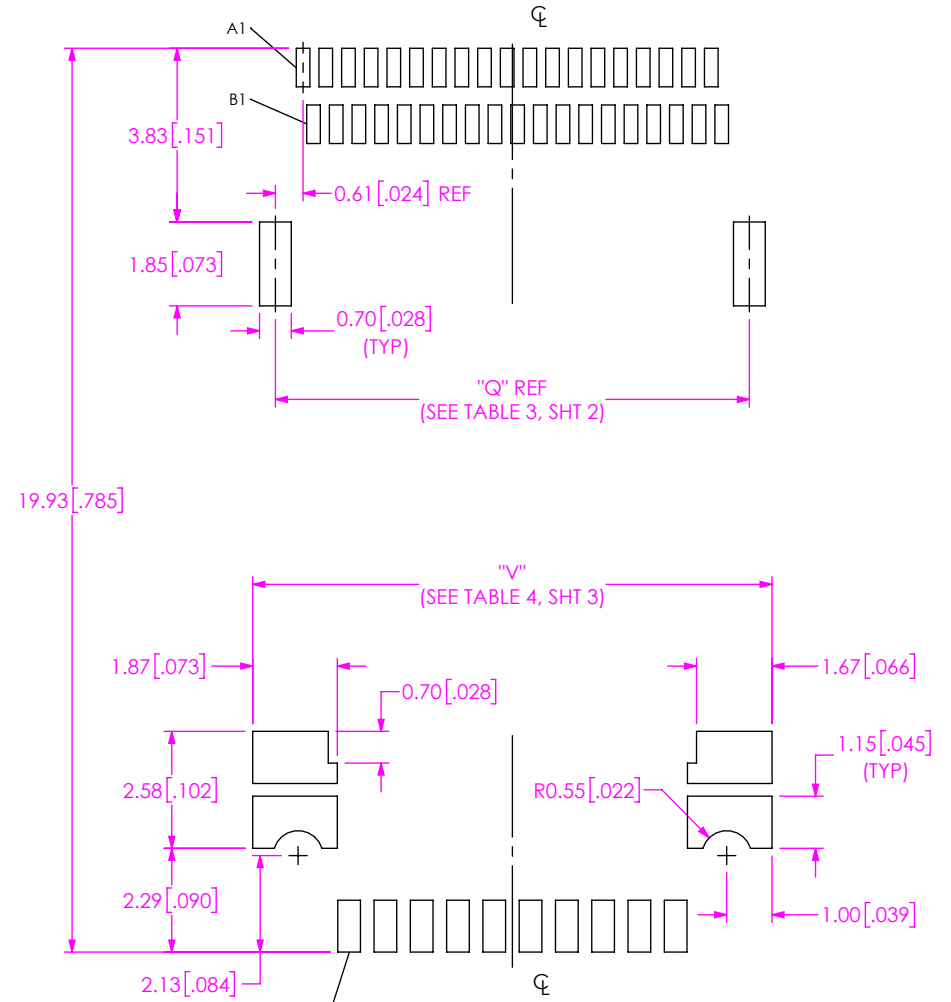


FIG 6
UEC5-019-1-X-D-RA-2-X STENCIL SHOWN
UCC8-010-X-X-S-2-A STENCIL SHOWN
(DIFFERENT AS SHOWN, OTHERWISE SAME AS FIG 5)
(AVAILABLE FOR EXISTING CUSTOMERS ONLY)

PROPRIETARY NOTE
THIS DOCUMENT CONTAINS CONFIDENTIAL AND PROPRIETARY INFORMATION AND ALL DESIGN, MANUFACTURING, REPRODUCTION, USE, PATENT RIGHTS AND SALES RIGHTS ARE EXPRESSLY RESERVED BY SAMTEC, INC. THIS DOCUMENT SHALL NOT BE DISCLOSED, IN WHOLE OR PART, TO ANY UNAUTHORIZED PERSON OR ENTITY NOR REPRODUCED, TRANSFERRED OR INCORPORATED IN ANY OTHER PROJECT IN ANY MANNER WITHOUT THE EXPRESS WRITTEN CONSENT OF SAMTEC, INC.



520 PARK EAST BLVD, NEW ALBANY, IN 47150
PHONE: 812-944-6733 FAX: 812-948-5047
e-Mail info@SAMTEC.com code 55322

NOTE:
STENCIL TO BE 0.13[.005] THICK.

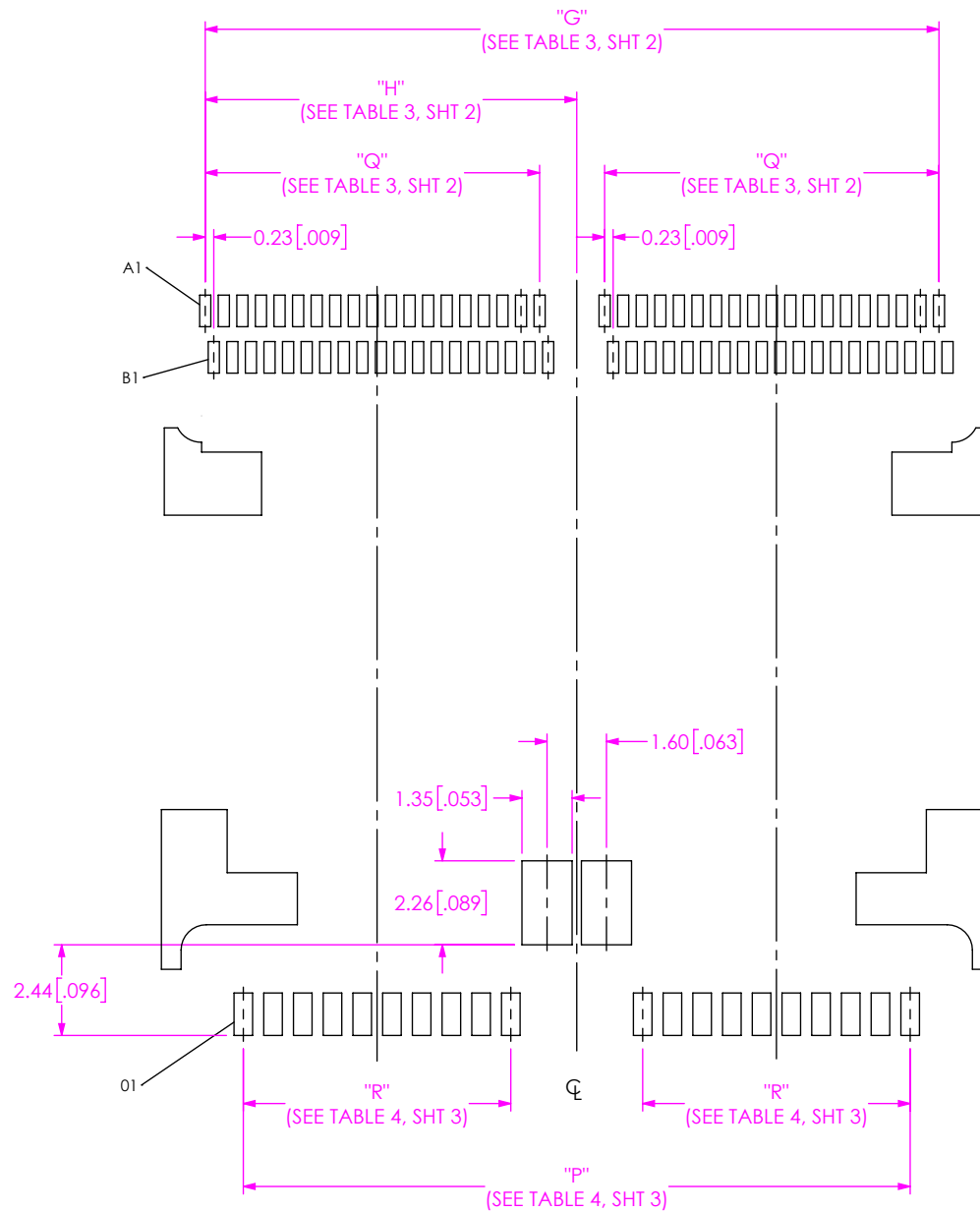


FIG 7
UEC5-038-1-X-D-RA-1-X STENCIL SHOWN
UCC8-020-X-X-S-1-A STENCIL SHOWN
(DIFFERENT AS SHOWN, OTHERWISE SAME AS FIG 5)
(NOT TOOLED)

F:\DWG\MISC\Mktg\Footprint\UEC5-XXX-1-X-D-RA-X-X-FOOTPRINT.SLDDRW

PROPRIETARY NOTE
THIS DOCUMENT CONTAINS CONFIDENTIAL AND PROPRIETARY INFORMATION AND ALL DESIGN, MANUFACTURING, REPRODUCTION, USE, PATENT RIGHTS AND SALES RIGHTS ARE EXPRESSLY RESERVED BY SAMTEC, INC. THIS DOCUMENT SHALL NOT BE DISCLOSED, IN WHOLE OR PART, TO ANY UNAUTHORIZED PERSON OR ENTITY NOR REPRODUCED, TRANSFERRED OR INCORPORATED IN ANY OTHER PROJECT IN ANY MANNER WITHOUT THE EXPRESS WRITTEN CONSENT OF SAMTEC, INC.



520 PARK EAST BLVD, NEW ALBANY, IN 47150
PHONE: 812-944-6733 FAX: 812-948-5047
e-Mail info@SAMTEC.com code 55322