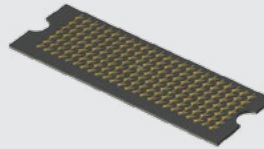
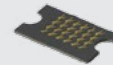




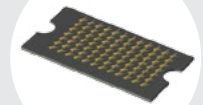
ZA8H-24-0.33-Z-07



ZA8H-06-0.33-Z-04



ZA8H-12-0.33-Z-07



(0.80 mm) .0315"

ZA8H SERIES

# HIGH-SPEED DUAL COMPRESSION ARRAYS

## SPECIFICATIONS

For complete specifications and recommended PCB layouts see [www.samtec.com?ZA8H](http://www.samtec.com?ZA8H)

**Contact Material:**

BeCu

**Plating:**

Au over 50 μ" (1.27 μm) Ni

**Core:**

Polyimide

**Overlay:**

Polyimide

**Current Rating:**

Testing Now!

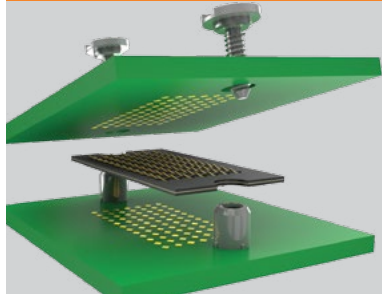
**Operating Temp Range:**

Testing Now!

**RoHS Compliant:**

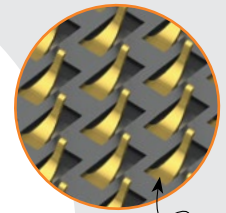
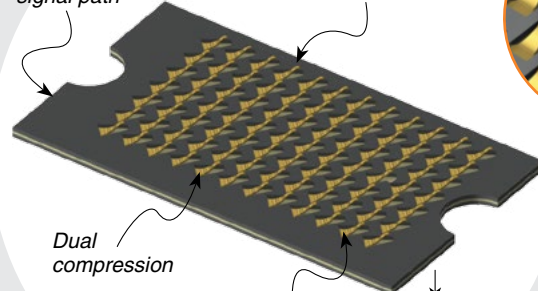
Yes

## APPLICATION



Extreme low profile provides shortest signal path

25 g normal force with (0.20 mm) .008" contact deflection



BeCu contacts

Up to 168 contacts

(0.33 mm) .013" height

## HIGH-SPEED CHANNEL PERFORMANCE

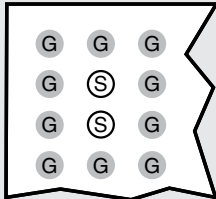
0.33 mm Stack Height

Rating based on Samtec reference channel. For full SI performance data visit [Samtec.com](http://Samtec.com) or contact [SIG@samtec.com](mailto:SIG@samtec.com)

NRZ

56 Gbps

## SIGNAL MAPPING



To meet 56 Gbps performance, footprint must meet specific signal/ground configurations. Contact the Signal Integrity Group at [SIG@samtec.com](mailto:SIG@samtec.com) for recommended signal routing.

ZA8H

NO. OF POSITIONS

HEIGHT

PLATING

ROWS

-06, -12, -24

(See Chart Below For Number Of Pairs)

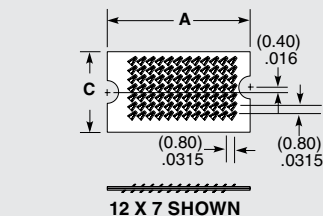
-0.33 = (0.33 mm) .013" Height

-Z = 6 μ" (0.15 μm) Gold on contact over 40 μ" to 100 μ" (1.02 μm-2.54 μm) Nickel

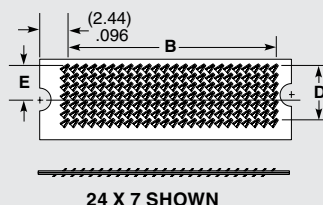
-04 = Four Rows

-07 = Seven Rows

ARRAY	PAIR COUNT
06 X 04	2
12 X 04	4
12 X 07	8
24 X 07	16



NO. OF POSITIONS	A	B
-06	(7.80) .307	(4.000) .1575
-12	(12.60) .496	(8.800) .3465
-24	(22.20) .874	(18.400) .7244



NO. OF ROWS	C	D	E
-04	(4.70) .185	(2.400) .0945	(1.75) .069
-07	(7.10) .280	(4.800) .1890	(2.95) .116

**Note:** Some lengths, styles and options are non-standard, non-returnable.

Due to technical progress, all designs, specifications and components are subject to change without notice.

[WWW.SAMTEC.COM](http://WWW.SAMTEC.COM)

All parts within this catalog are built to Samtec's specifications. Customer specific requirements must be approved by Samtec and identified in a Samtec customer-specific drawing to apply.