

## Installation of the program isegCANHVControl

The system requirements for "iseqCANHVControl" are a host-PC with WINDOWS 2000 or XP operating system (at least an Intel® Pentium III compatible processor and a graphic resolution of 1024\*768).

For Install of the program "iseqCANHVControl" for the first time on your Host-PC, please make sure that the software setup has to be done before the CAN hardware is connected to the Host-PC. The "iseqCANHVControl" can communicate with only one CAN bus line via CAN hardware from PEAK (ISA card, LPT dongle, PCI card and USB adapter) or from SYS TEC (USB CAN).

### Step 1:

The corresponding device driver can be selected during the installation of the program "iseqCANHVControl" while running of the setup program. The installation has to be started with the program "Setup.exe" from the directory Win2000\_WinXP on the CD.

Follow the instructions and restart your system after the end of the installation or switch off the Host-PC and install the hardware.

If you have installed a non Plug-and-Play PEAK CAN hardware on your system or if you have installed the driver for the SYS TEC USB CAN hardware the software must work properly with the CAN hardware after the restart.

If you want to install a Plug-and-Play PEAK CAN hardware on your system we suggest proceeding as follows:

The installation of the PEAK CAN hardware should be made after the setup procedure of "iseqCANHVControl" because the drivers will be copied into the directory \Program Files\iseq\iseqCANHVControl\PCAN\_PCI or ..\PCAN\_USB on your system during the setup procedure.

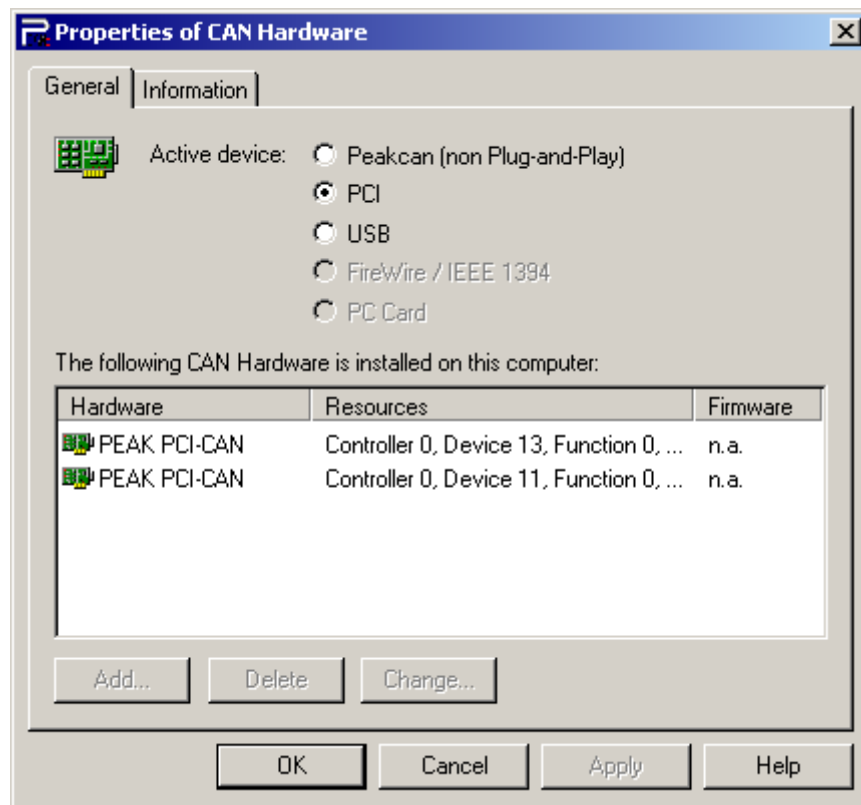
After the end of the setup procedure close the OS and switch off your system. Then connect or build in the PEAK hardware with the Host-PC. Start your machine. The OS will find the new hardware and you can root under WINDOWS Hardware Wizard to this directory.

If there are any problems see manual "CAN remote ctr.pdf" part: "CAN Remote Control if connected to the PCI card or USB adapter".

## Step 2:

PEAK hardware:

Please check whether the CAN software is installed properly.



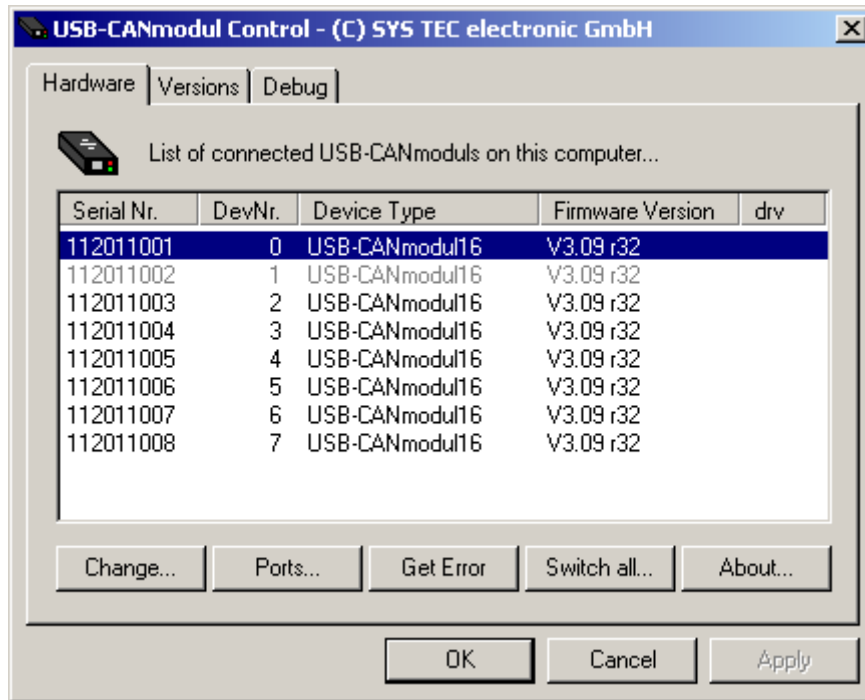
Go to the Windows "control panel" and open "CAN-Hardware"-control panel. Select with radio button the "Active device". If you have Plug-and-Play hardware, a symbol of the hardware should be displayed in the window. Clicking on "Information" you can see, that a driver has been loaded. It depends on your hardware whether it is a non Plug-and-Play driver (for parallel port dongles and ISA cards) or a Plug-and-Play driver (for PCI cards, USB adapter). The serial number of this driver is shown too.

When using parallel port dongles make sure that the interrupt system of the CAN hardware is working properly. In this case go to the Windows "device manager" and look that the correct interrupt has been set. You must set the I/O properties of the LPT - see separate manual "CAN RemoteCtr.pdf".

SYS TEC hardware:

Please check whether the „isegCANHVControl“ software is installed properly.

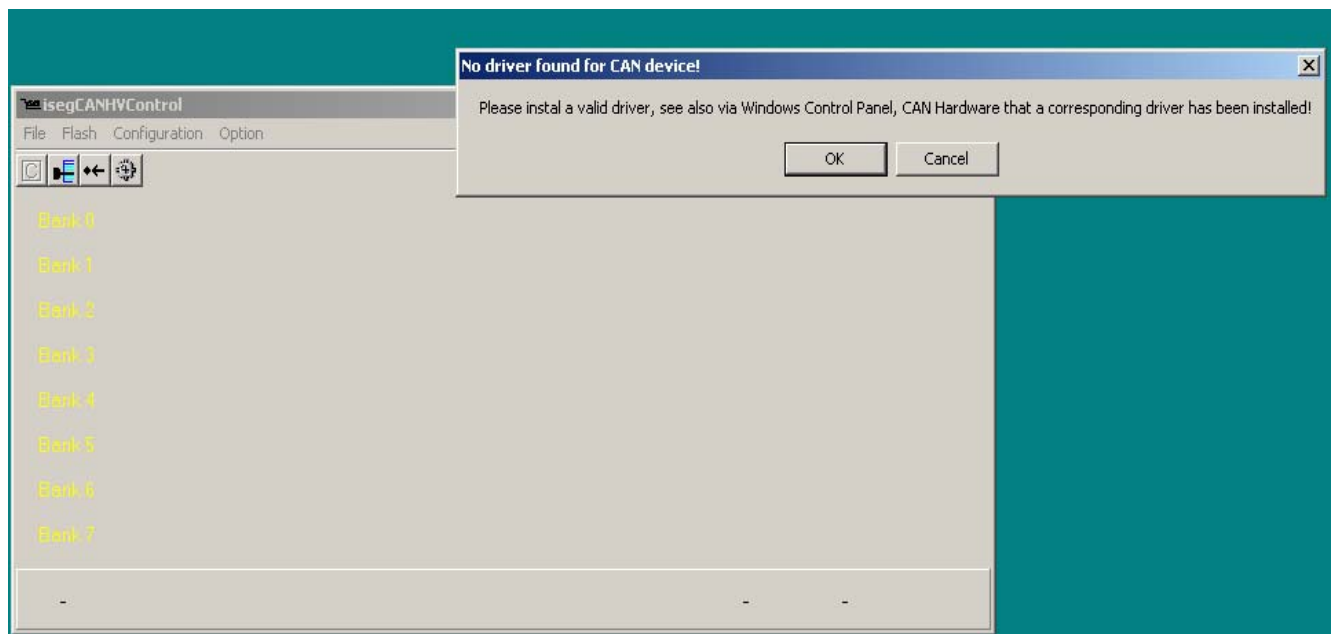
Go to the Windows “control panel” and open “USB-CANmoduleControl“ panel. There are information of the scanned hardware or the version of the driver.



### Step 3:

The setup program installed a program group "iseg HV Control" with the entry "isegCANHVControl". Select the entry "isegCANHVControl" via the Start button from WINDOWS Taskbar, the folder Programs and "iseg HV Control" to start the program. When you receive the message "Client isegCANHVControl has been connected to isegnet[x] or "isegCANHVControl" has been connected to the SYS TEC USB CAN hardware" the internal connection to the CAN hardware is working properly and you should try to control the HV modules via the CAN bus. Push the key "F1" to read the online help manual.

If a connection to the hardware cannot be established you will receive a warning message in the status line and a dialog will open automatically.



The program can be terminated via the "OK" button or the hardware dialog can be displayed to choose another type of CAN interface via the "Cancel" button. All changes in the "CAN hardware setup" dialog will be activated after pushing the "Save" button and a restart of "isegCANHVControl".